

SPECIFICATION OF HONEY BEE

EK1H-E004



1. Content:

- 1). A complete honey bee ready to fly.
 - 2). 8.4V/ 650mAh Ni-MH battery pack
 - 3). wall charger for battery
 - 4). Standard PPM transmitter (4CH)
- Ek2-0404**

2. Specification

- 1). Main rotor diameter: 520mm
- 2). Fuselage length: 520mm
- 3). Max all-up-weight: 290g
- 4). Power: 8.4v Ni-MH battery pack
- 5). Radio: 4CH/PPM

3. Description

- ★ Pre position servo mounts for easy setup
- ★ Carbon fibre fly-bar and boom for superior strength and durability.
- ★ High performance main electric drive motor for extended duration flight.
- ★ Unbelievable flight performance 12 minutes on 7cell Ni-Mh battery
- ★ Ready for flight out of box except 8 AA battery (sold separate)

EK1H-E004**ORDER NO. ILLUSTRATION**

Tail motor 8T 0.5m

EK1-0001A



Main motor 10T 0.5m

EK1-0000



Charger 230V (UK)

EK1-0050



Charger 220V (china)

EK1-0053



Charger 110V (USA)

EK1-0052



Charger 230V EUROPEAN

EK1-0051



8.4V 650mAh Ni-MH battery

EK1-0100



Rotor head set

EK1-0200A



Main blade

EK1-0201



Control link main blade

EK1-0202



Center hub set

EK1-0203



Fly bar

EK1-0204



Paddle control frame(outer)

EK1-0206



Swashplate set

EK1-0207



Servo Push-rod link set

EK1-0208



Battery hanger

EK1-0210



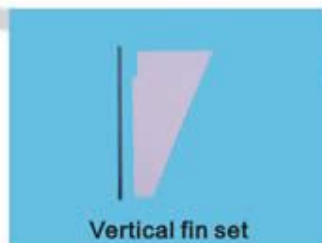
Bearing 3*6*2.5

EK1-0213



Tail rotor housing

EK1-0215



Vertical fin set

EK1-0216A



Tail rotor drive & shaft set

EK1-0217



bearing 2*6*3

EK1-0218



Tail rotor blade

EK1-0219



Training sets

EK1-0221



Mounting fastener & wrench

EK1-0222



Tail motor heat sink

EK1-0223



Main motor heat sink

EK1-0224



Screws/nuts/washers

EK1-0225



Main & tail motor wire

EK1-0226



Paddle set

EK1-0233



Main shaft drive gear set

EK1-0238



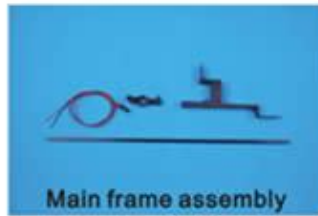
Skid set

EK1-0239



Batter support & skit set

EK1-0240



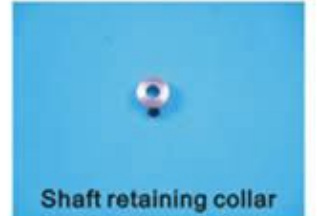
Main frame assembly

EK1-0248



Main axis

EK1-0267



Shaft retaining collar

EK1-0268



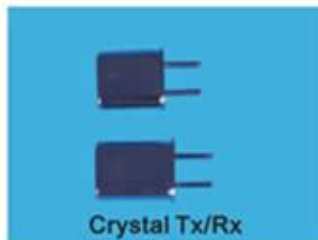
Flybar balance weight

EK1-0269



Servo control set

EK1-0271



Crystal Tx/Rx

EK2-0000



Receiver(w/o Tx/Rx)

EK2-0422



Servo

EK2-0500



3in1 mixing controller

EK2-0701



Coach wire

EK2-0901



Softdog for FMS

EK2-0900



4CH transmitter

EK2-0404D



4CH transmitter

EK2-0404



Cabin

EK1-0274

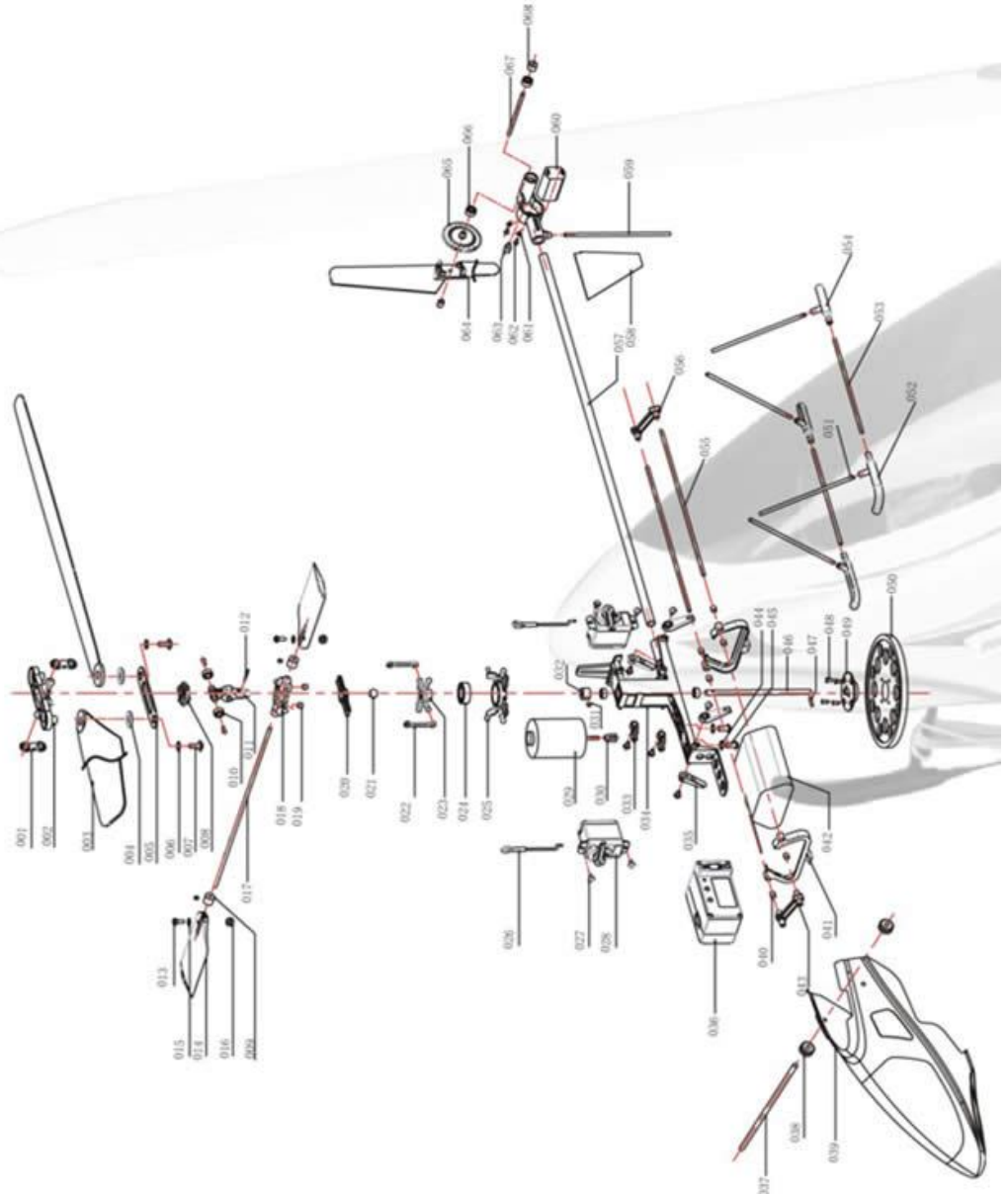


4in1 mixing controller

EK2-0702

Exploded view

EK1H-E004



Item No.	Description	Qty. needed in one helicopter	Item Number	Description	Qty. needed in one helicopter
001	Main blade control link	2	035	Ball link	2
002	Main blade mount	1	036	4in1 controller	1
003	Main blade	2	037	Cabin fixed bar	1
004	Fixed collar	2	038	Grommet	4
005	Stator for main blade	1	039	Cabin	1
006	Washer	2	040	PVC tube	9
007	Cap screw (M2.5)	2	041	Battery holder	2
008	Rotor head	1	042	Battery pack	1
009	Collar	2	043	Bar joiner	2
010	Bearing (6*3*2.5)	4	044	Main motor washer	1
011	Center hub	1	045	Main motor screw (M3)	2
012	Bushing	2	046	Main shaft	1
013	Screw (M2.6)	2	047	Main shaft pin	1
014	Paddle	2	048	Main gear screw	4
015	Washer	2	049	Main gear fix set	1
016	Nut	2	050	Main gear	1
017	Fly-bar	1	051	Strut A	4
018	Paddle control frame(outer)	1	052	Skid A	2
019	Socket head cap screw(M3)	2	053	Strut B	2
020	Rotor bar	1	054	Skid B	2
021	Copper ball	1	055	Battery hanger bar	2
022	Paddle push-rod	2	056	Bar joiner	2
023	Swash-plate	1	057	Tail boom	1
024	Bearing (13*7*4)	1	058	Vertical fin	1
025	Swash-plate (outer)	1	059	Tail protect bar	1
026	Servo push-rod	2	060	Tail motor	1
027	Screw for servo(pw1.7*4)	4	061	Washer	2
028	Servo	2	062	Screw(M1.3)	2
029	Main motor	1	063	Tail motor pinion	1
030	Main motor pinion	1	064	Tail blade	1
031	Socket set screw (M3)	3	065	Tail gear	1
032	Set collar	1	066	Bearing (2*6.3)	2
033	Servo control	2	067	Tail rotor shaft	1
034	Main frame	1	068	Spacer	1