



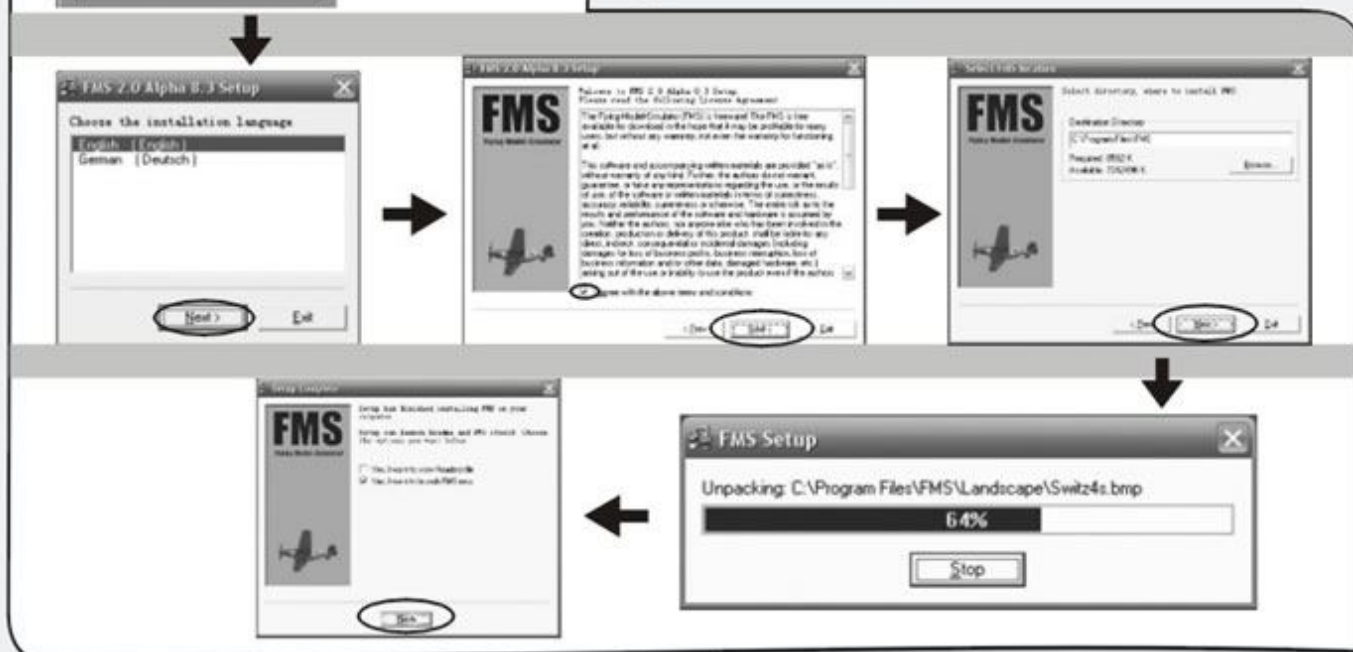
1 Connection with your computer



2 Software Setup

User Manual for Alpha simulator
User Manual for flight simulator

Aerobatic actions in the air



1. Choose "Analog Control" from the control menu.

2. Choose "Joystick Interface" from the wireless control setting interface, and click "Mapping/Calibration", then click "OK".

3. Choose channel, Inv, Exponent data.

4. Click "Calibrate" to calibrate your transmitter.

3 Interface setup and calibration

Set the sticks at the neutral position

Revolve the sticks with full extent several turns

Put the throttle trim at the lowest position and put others at the neutral position

Then carry out the three essential adjustments. (As showed on the left picture)

4 Select model type

5 Load flying landscape

6 Sound

7 Restart

! shortcut key " r "

8 Pause

! shortcut key " p "

9 Select language